



SMART FACTORY

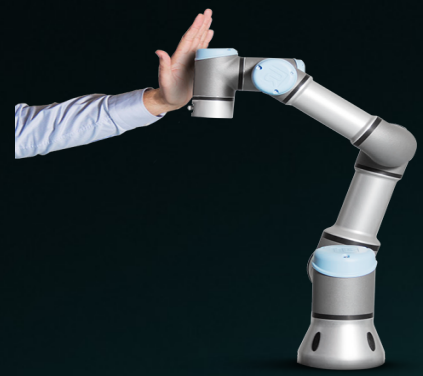
Ali Kuruçaylı

Industrial Mfg. Engineer

SET Manisa Plant

Smart Factory Program

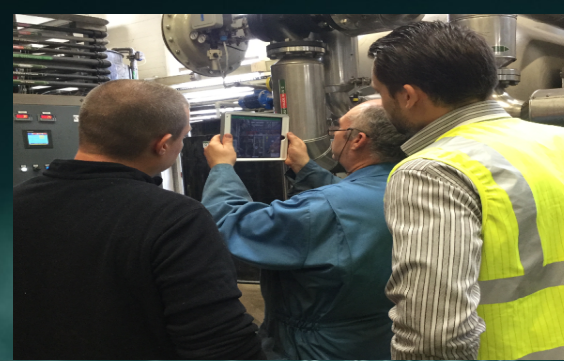
Cobots



AGV



Augmented Operator Advisor



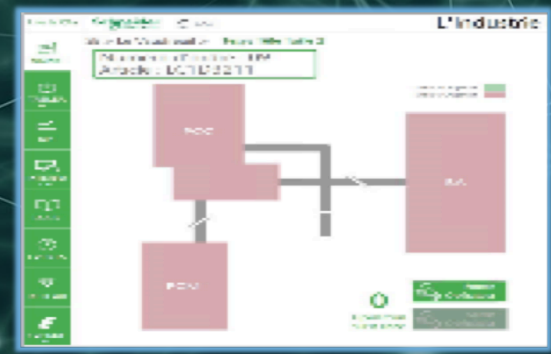
Virtual Reality



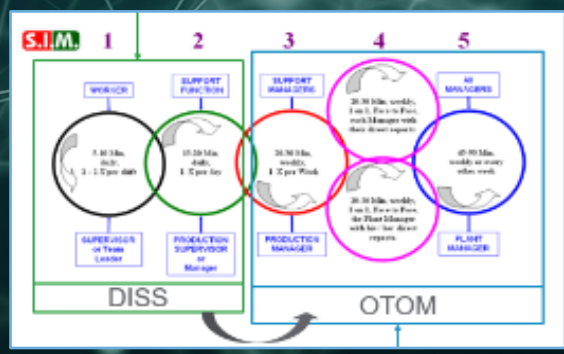
IIoT



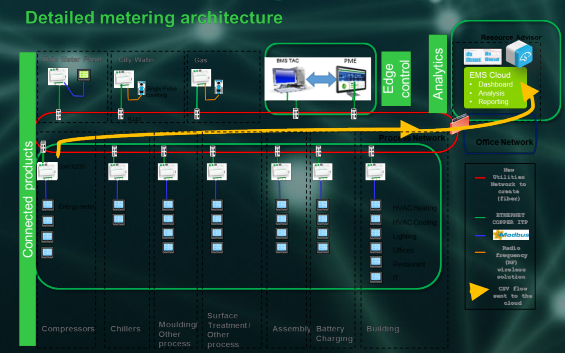
LDS



DISS



SMART Energy Management



SMART FACTORY

TSC 4.0



2019 Q4

2017 Q4

2017 Q3

2017 Q3

2017 Q2

2017 Q1

2016

2014

2013

2013

2012

2012

2012

2011

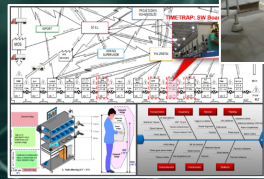
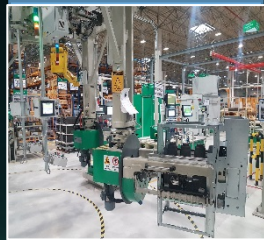
Lean Flow & Automated Lines

Advanced Softwares
Barcode Applications
Lean Flow Optimizations

Introduction to Industry 4.0
Research & Pilot Applications
Cloud Based Softwares
Augmented Operator

Life Is On

Schneider
Electric



Arcadia Digital Audit Application



No Paper

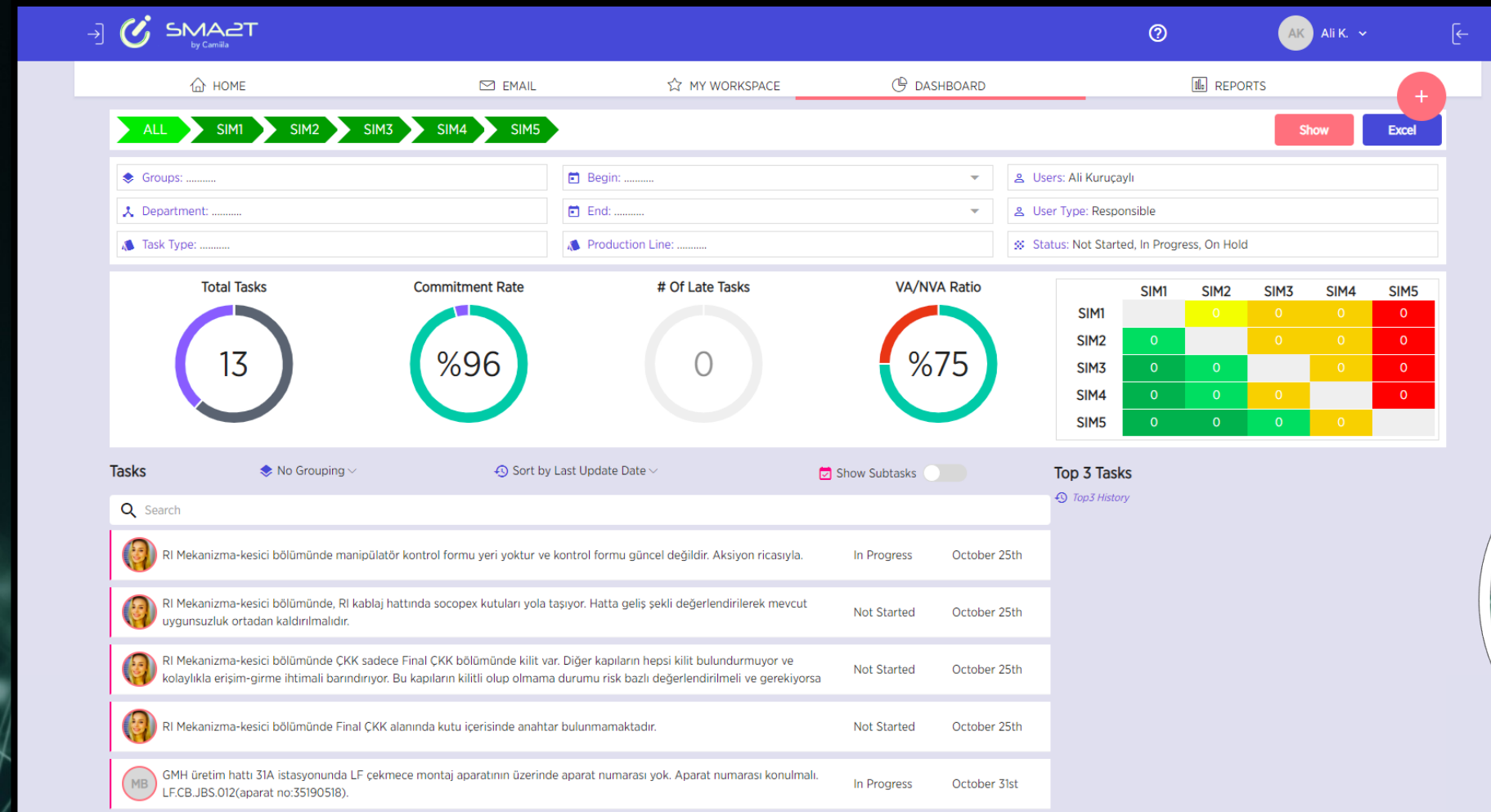
Zero Non Value Added Time

Eco-Friendly Solution

Life Is On

Schneider
Electric

SMART2 Action & Meeting Management Application



Life Is On

Schneider
Electric

Supplier Development & Digital Data Integration

IRG Makina



Sertur Plastik



AKAR Makina



İNCİ: Sıla Tayhani



Vizyon
Vedat Kocatürk



Sertur Plastik
Tanıl Denizel



Örnek Makina
Kalite@ornekmakina.com



İzmir Kalıp
Ahmet Lütfü Aksoy



Akar Makina
Hüseyin Yeşil



Teknikel
Serhat Çetin

Life Is On

Schneider
Electric

SENTRY Production Management Software

Digital Work Instructions



Autocontrol Checklists



Live Quality Warnings



Digitized Methods Engineering Tool



World Wide Recognitions

Paris, FRANCE



Joyce Helena PEREIRA BRANDAO – October 23, 2017 at 9:08 PM

This is great! Time definition is quite important for all of us to speed up efficiency. Thanks for sharing.
How are the employees taking it? What was the feedback?

South Africa



Aubrey Masilela – October 26, 2017 at 1:17 PM

Hi [Can Sezen](#)

Our DC in South African we don't make use of a video analysis. How can I make use of the software to support the manual work (MTM) that we do our DC? Interesting tool I would like to know more about it? any training or webinar that is scheduled?

Rojo Gomez, Mexico



RAQUEL PEREZ – October 30, 2017 at 3:49 PM

Hello I think the program is a great helpful to times definition, good job!. I have a question, how can I obtain the software to Rojo Gomez Plant? What are requirements for that?

Egypt



Mahmoud Khalil – October 30, 2017 at 4:35 PM

Very good Job SET team well done.

I would suggest to check with our ETO IPMs to standardize the solution like OTOM

Curitiba, Brazil



JONATHAN PINHEIRO – December 28, 2017 at 2:42 AM from Android
Best practices 🍷

cc: EDSON BARBOSA FERREIRA and FRANCISCO CAMOLES I DE

Shang Hai



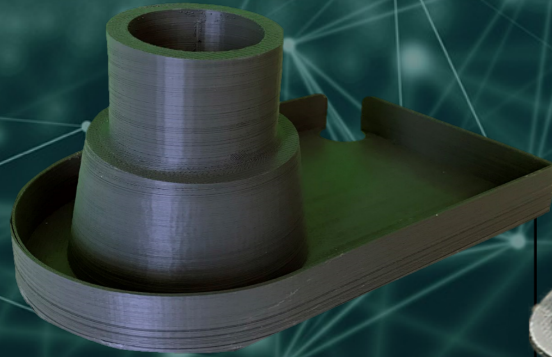
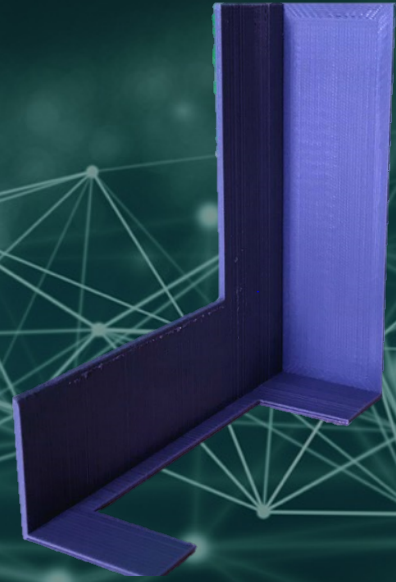
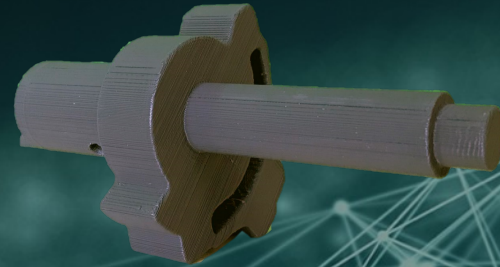
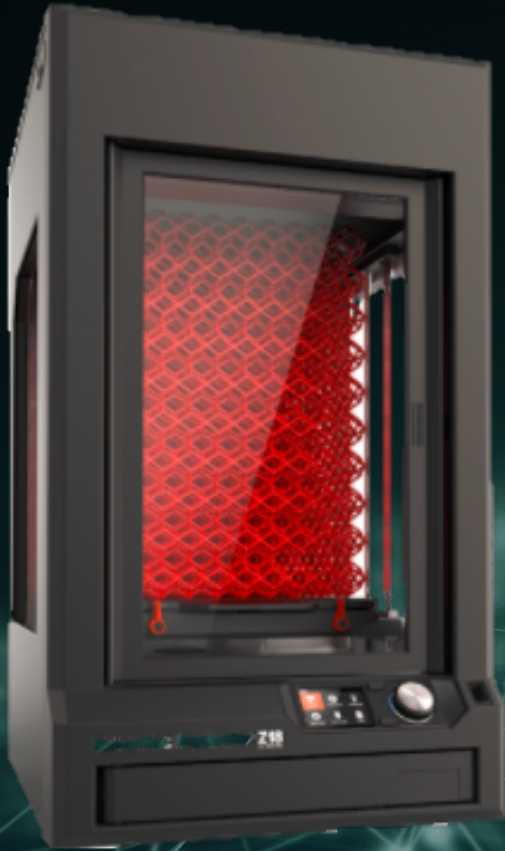
Jian XIAO – January 2 at 7:48 AM

Great! I will share to our Method team this good practices!

Life Is On

Schneider
Electric

3D Printing for Non-Production Parts



Life Is On



Automated Guided Vehicle in Shopfloor



Eliminates Transportation Time

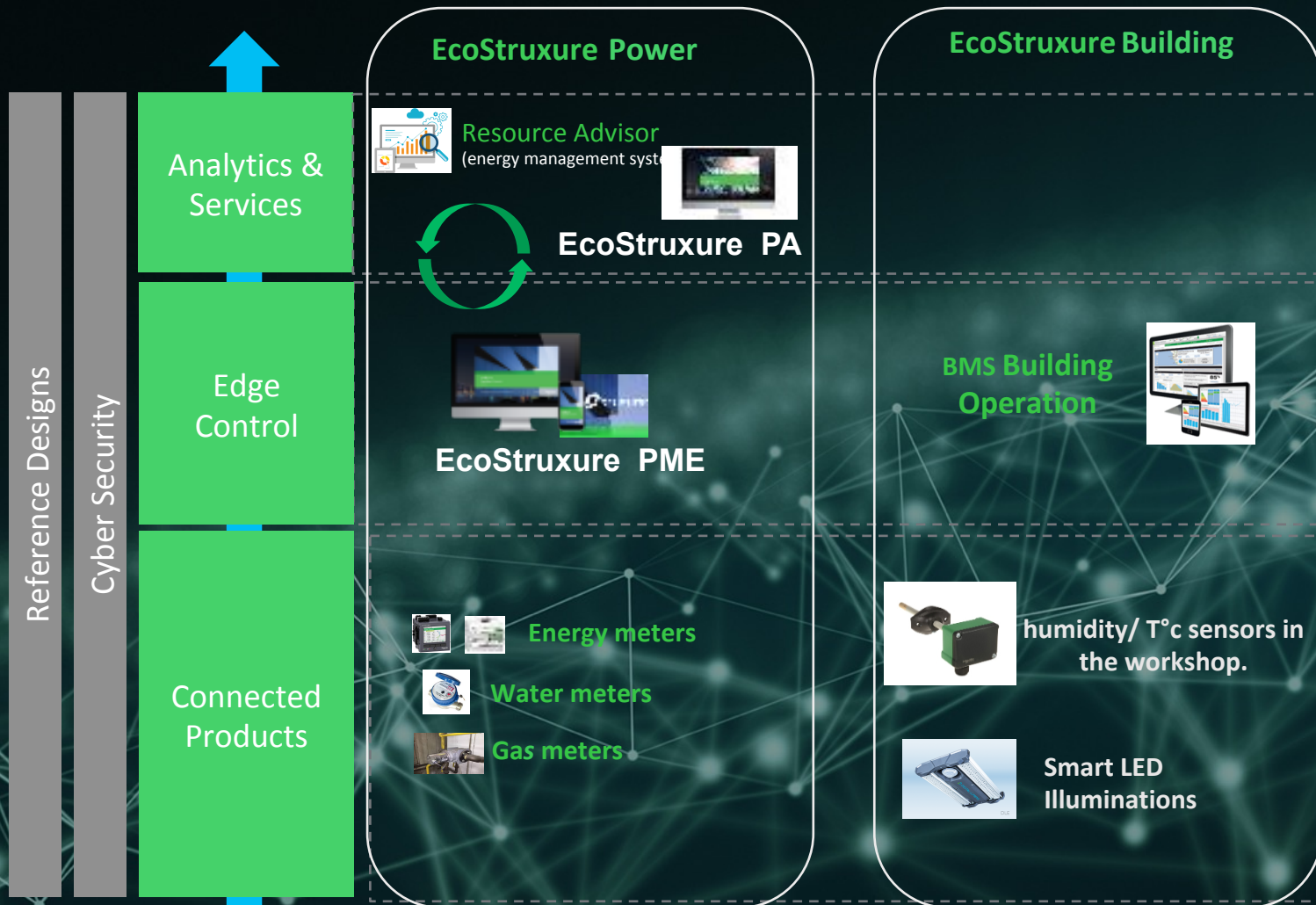
Carrying Finished Goods to Shipping Area

Internally Developed & Manufactured by Maintenance Team

Life Is On

Schneider
Electric

Smart Energy Management



PME (Power Monitoring Expert) through **RA** (Resource Advisor) used to energy reporting (corporate)

Power Advisor used for annual report (2). Availability of Electrical network.

BMS Update to EBO 2.0
Connect Electrical cabinet T°C, radiant, compressed air, alarm, notification...

PME used for

- Energy Analysis Reports Module
 - Power Quality Performance Module
 - Event Notification Module
- (Direct reactivity on critical equipments)

Life Is On

Schneider
Electric

Other Digitized Applications

Digital Idea System



Collecting Ideas upon Digital Platform

Project Funnel



Managing Improvement Projects upon Digital Platform

CAPEX Management



Managing CAPEX process upon Digital Platform

Fixed Asset Tracking



Tracking all assets by barcode

Epoxy OEE Tracking



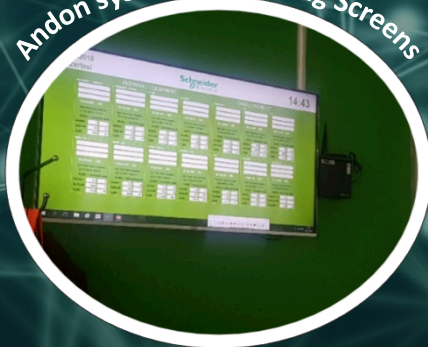
Tracking Production KPIs by software

Warehouse Truck Scheduling



Scheduling supplier trucks upon digital platform

Andon system & Tracking Screens



Tracking production via screens in offices

ENABLON Safety Application
















Inform all near misses by mobile phone

Life Is On



Schneider
Electric

What is Smart Factory Program for Schneider Electric?

	Cobot	AGV	AGV Fybot	IIoT	Augmented Reality	Virtual Reality	LDS	DISS	Versatility Matrix	PME / FE or others	Resource Advisor	3D Printing	Smart Glasses: KL ²
DONE in 1 st phase													
Under study													
Project validated													
Not Applicable													
MMR ?	NO	NO	NO	NO	YES	NO	YES	YES	YES	YES	YES	YES	NO