



Compact Hydro Turkey
HTR-EPS

MARCH 2015



CONTENT

INDEX

Design

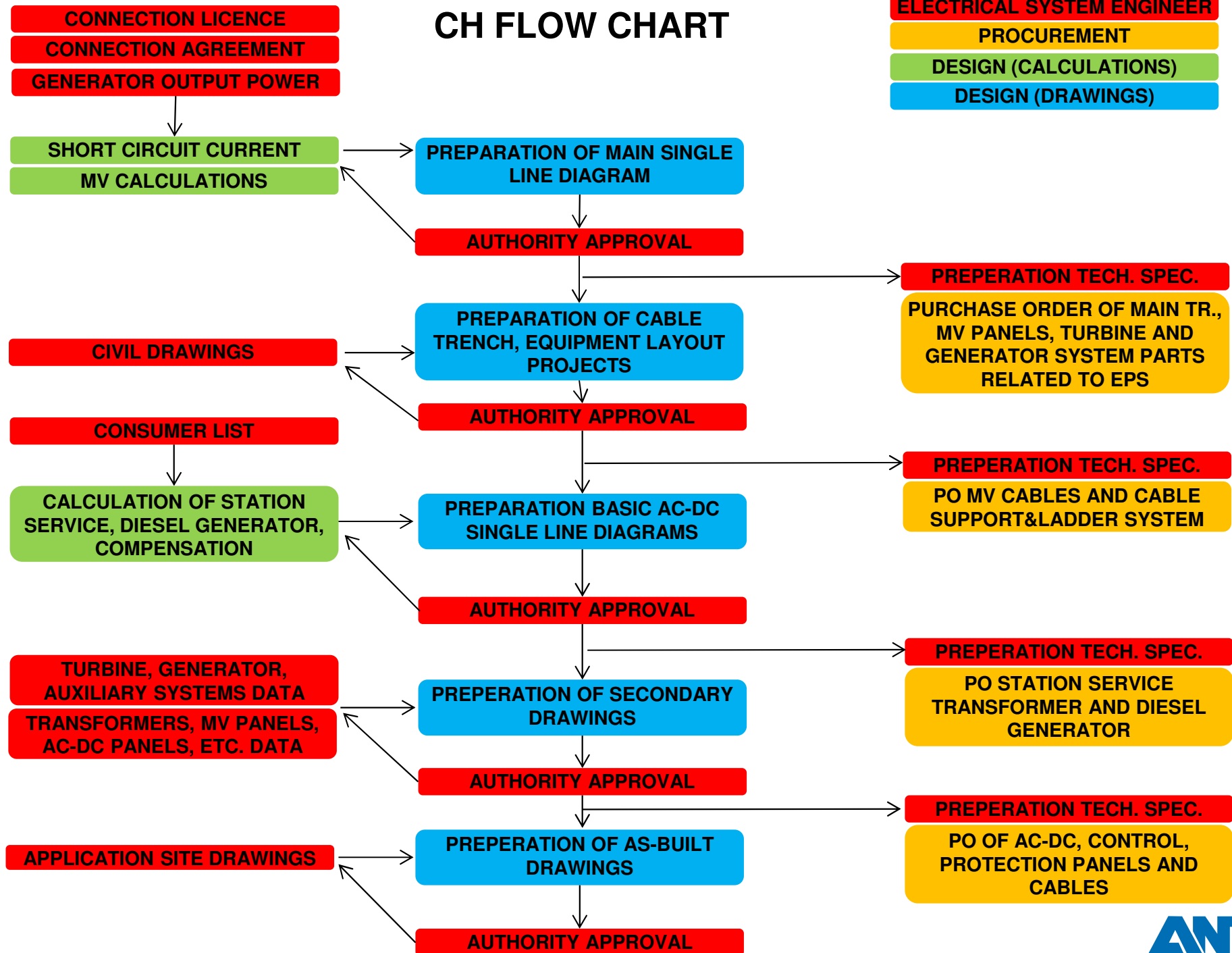
Engineering tools

Services

Capacities & Abilities

References

CH FLOW CHART

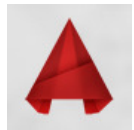


CAPACITIES & ABILITIES

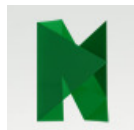
DRAWING & ENGINEERING PROGRAMS



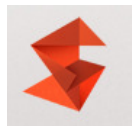
AUTODESK INVENTOR PRO 2015
3D Modelling



AUTODESK AUTOCAD 2015
2D Modelling



AUTODESK NAVISWORKS MANAGE 2015
3D Render



AUTODESK SHOWCASE 2015
Presentaion Program



ETAP Version 12.0.02.2-Com. aided eng.
Calculations



EPLAN Electric Version P8 2.2-Com. aided eng.
Panel Desing



DIALUX Version 4.1.2- Illuminate



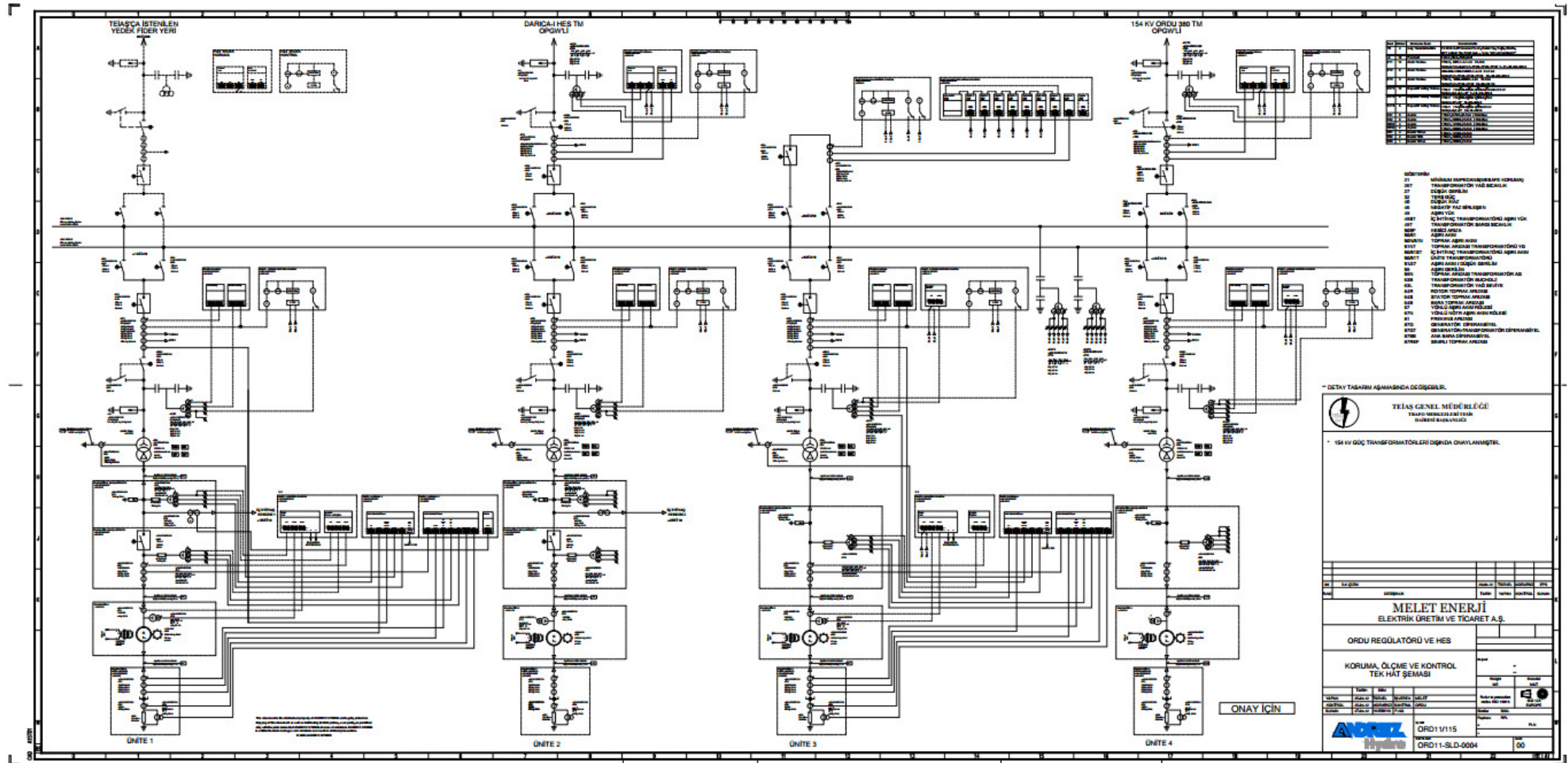
DRS-WIN Version 4.19-Protection



SCALA Version 6.70.08-Scada

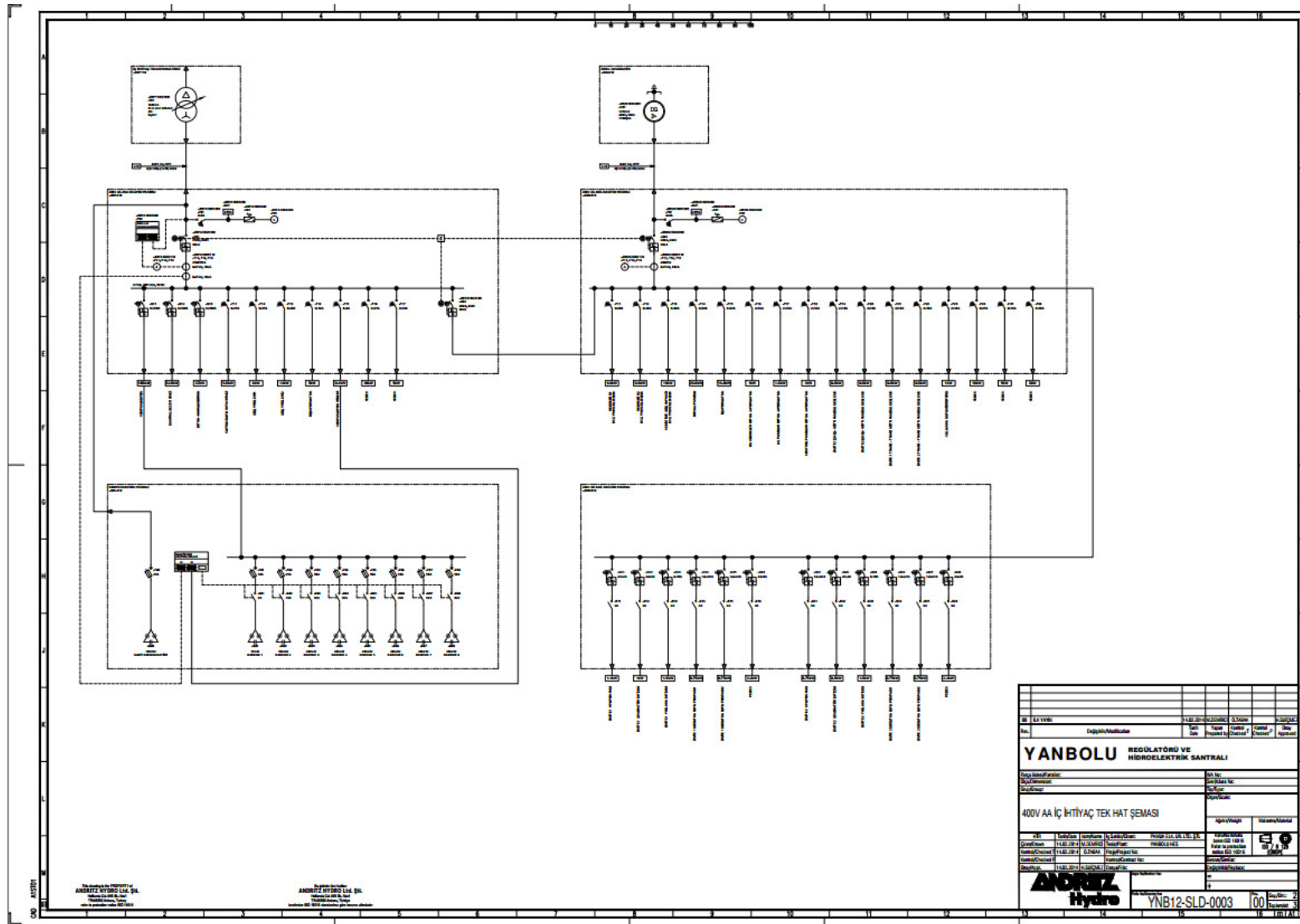
DESIGN

SINGLE LINES -MAIN



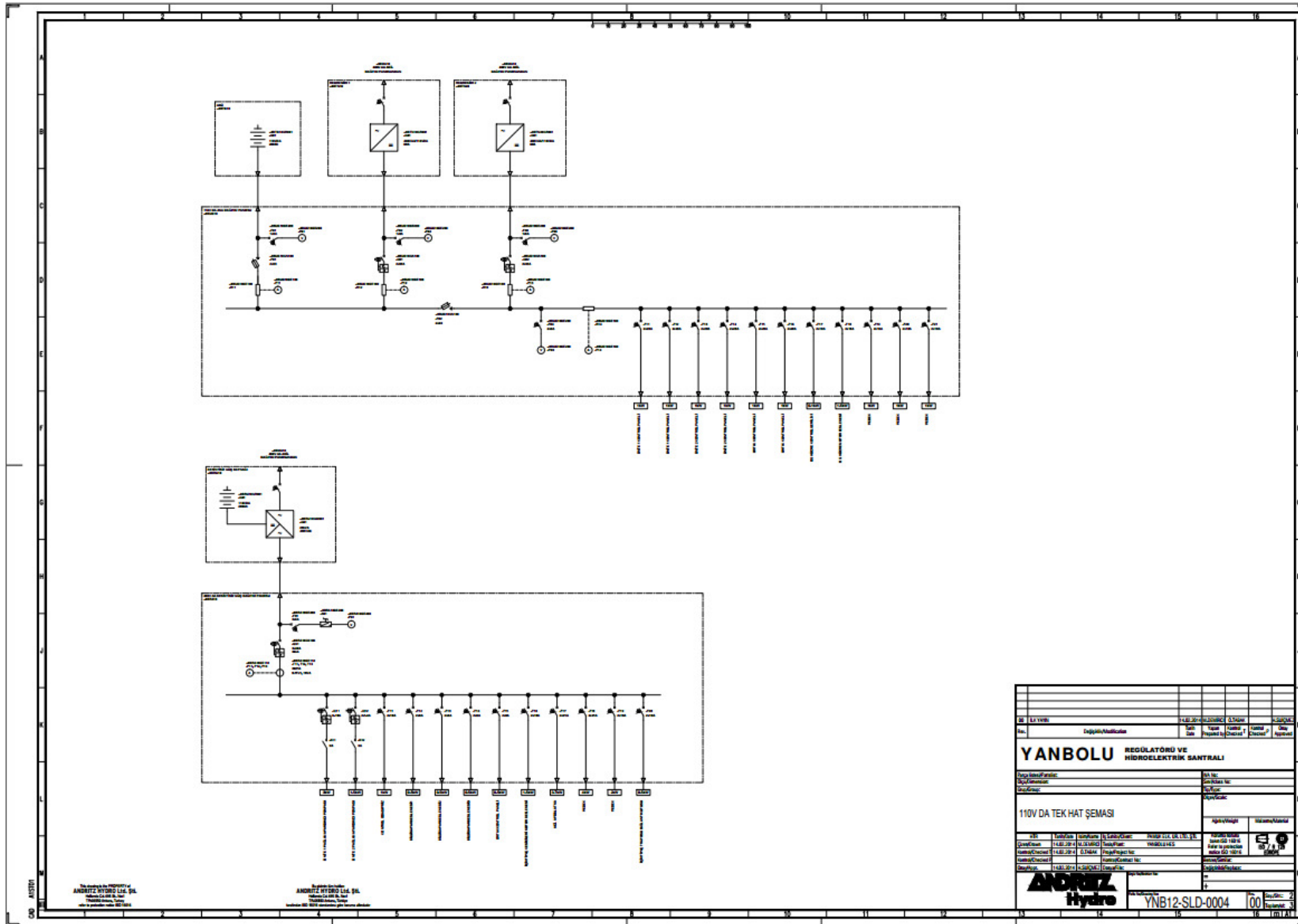
DESIGN

SINGLE LINES-AC DISTRIBUTION



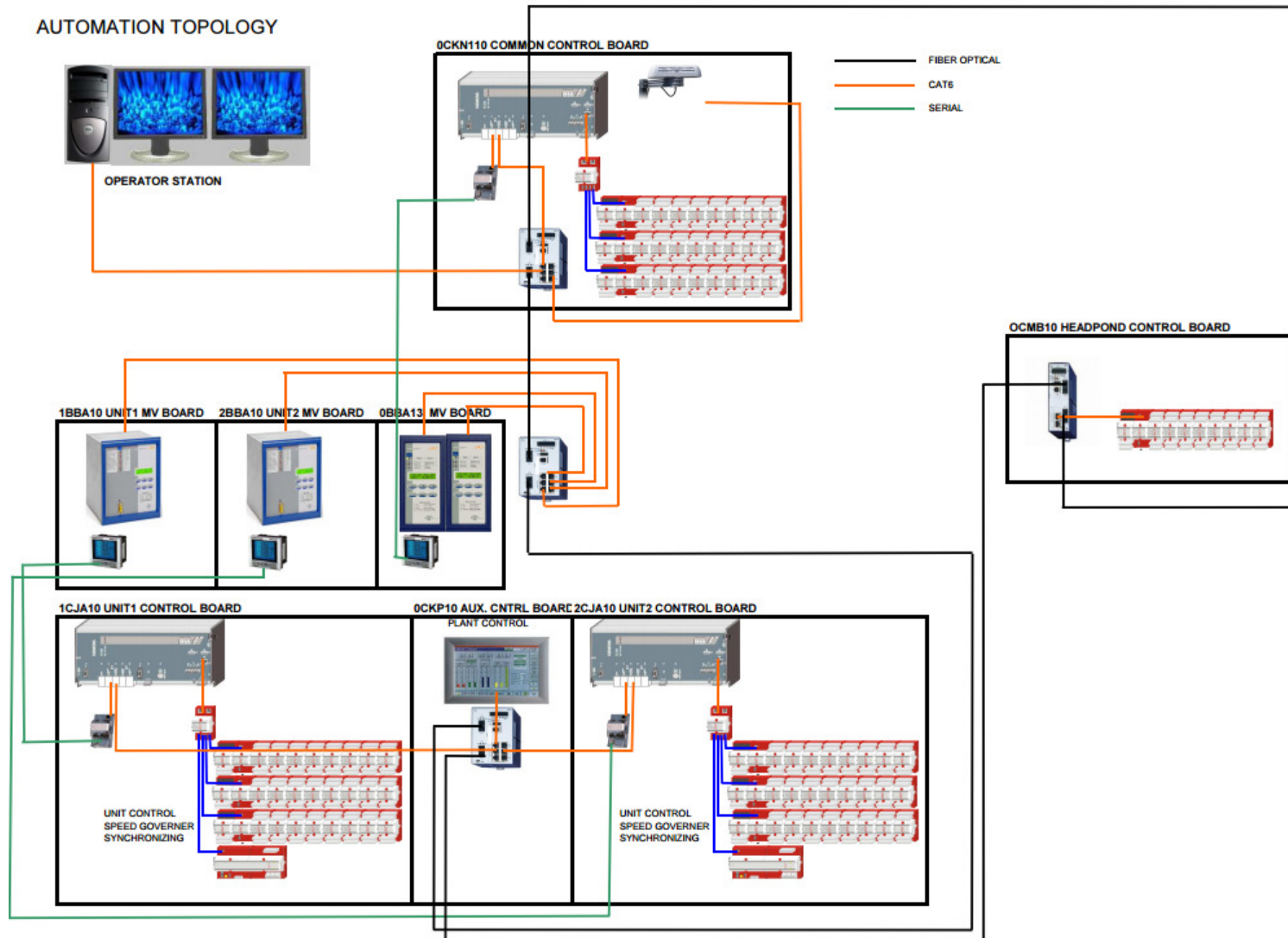
DESIGN

SINGLE LINES-AC DISTRIBUTION



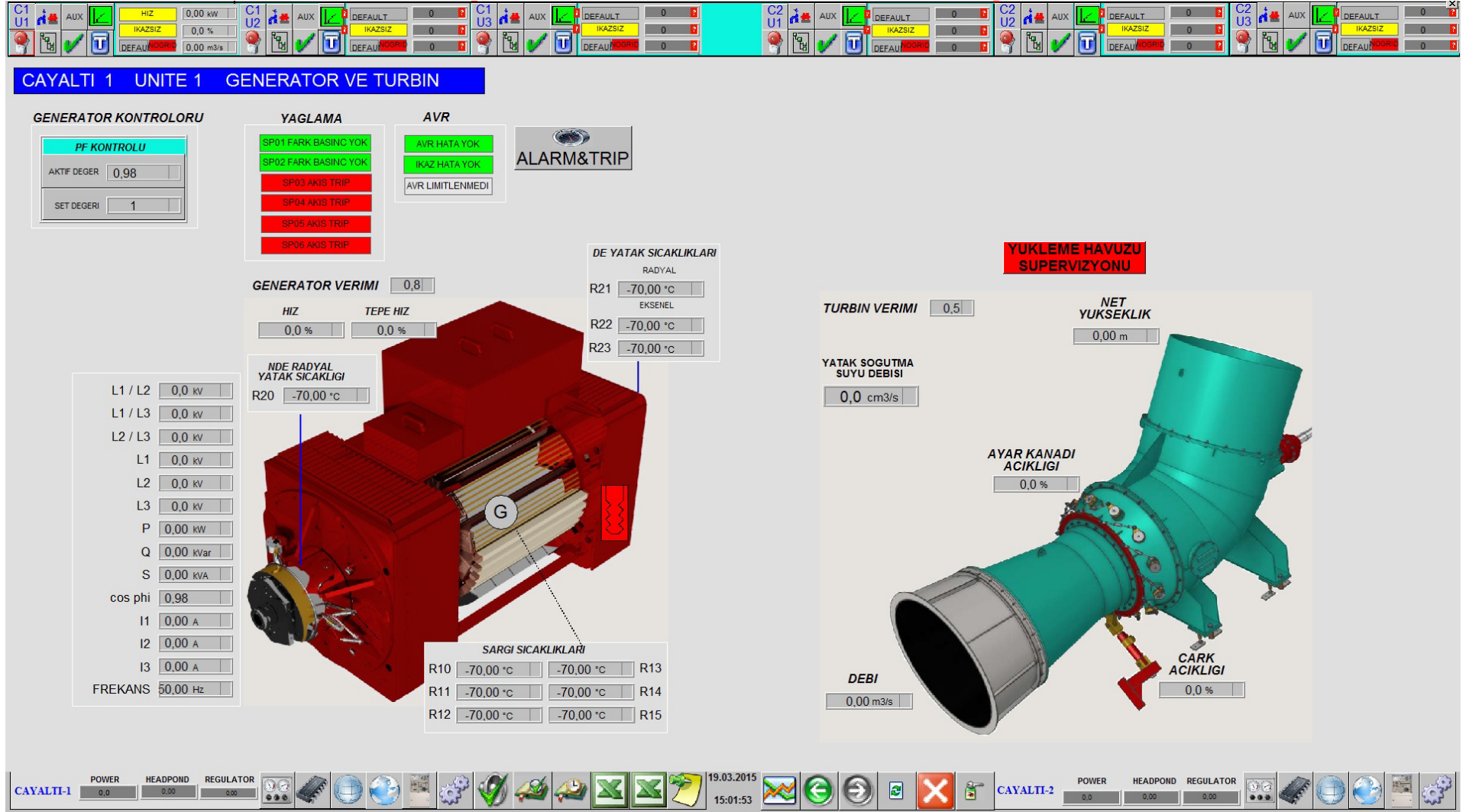
CAPACITIES & ABILITIES

AUTOMATION CONCEPT



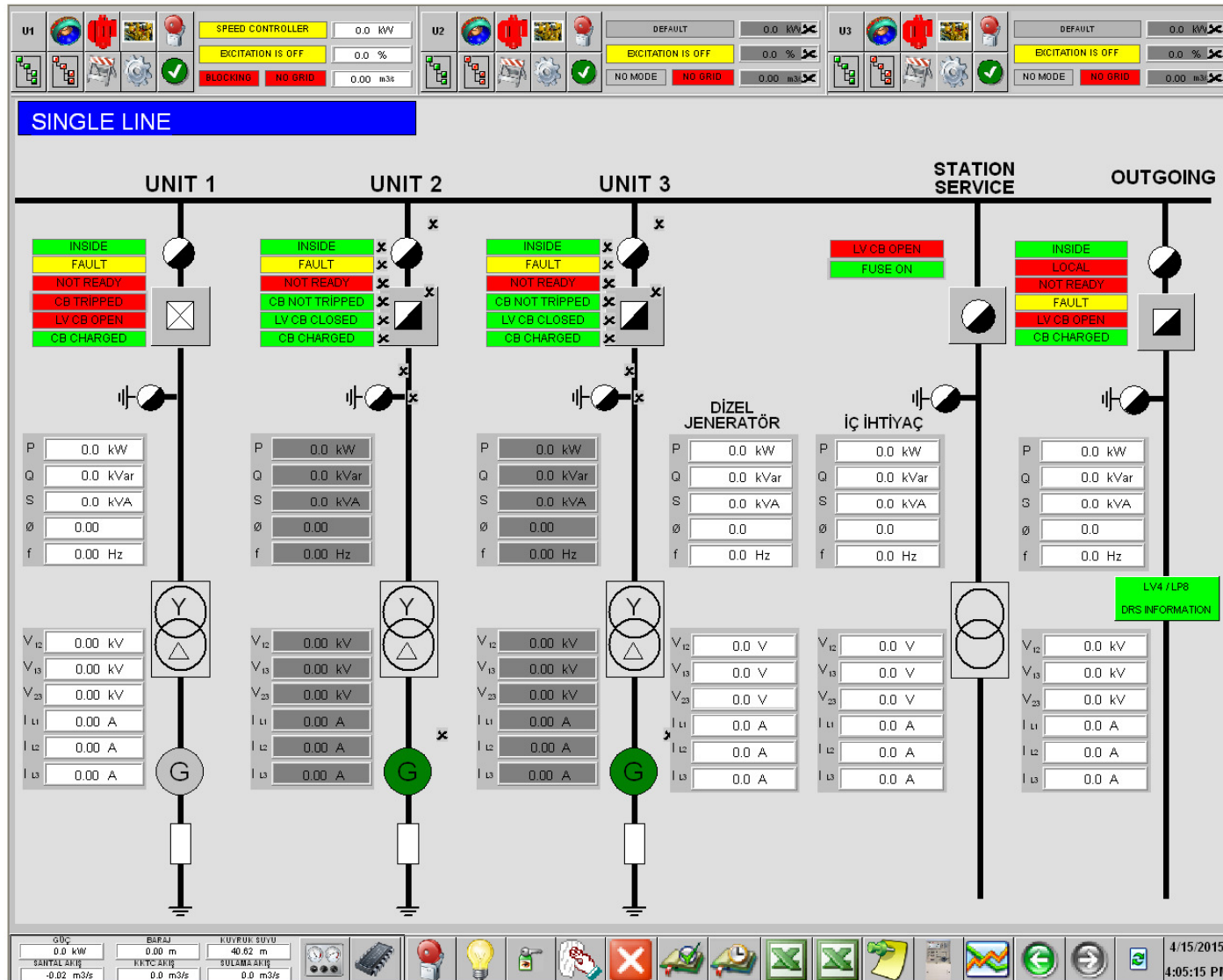
CAPACITIES & ABILITIES

SCADA



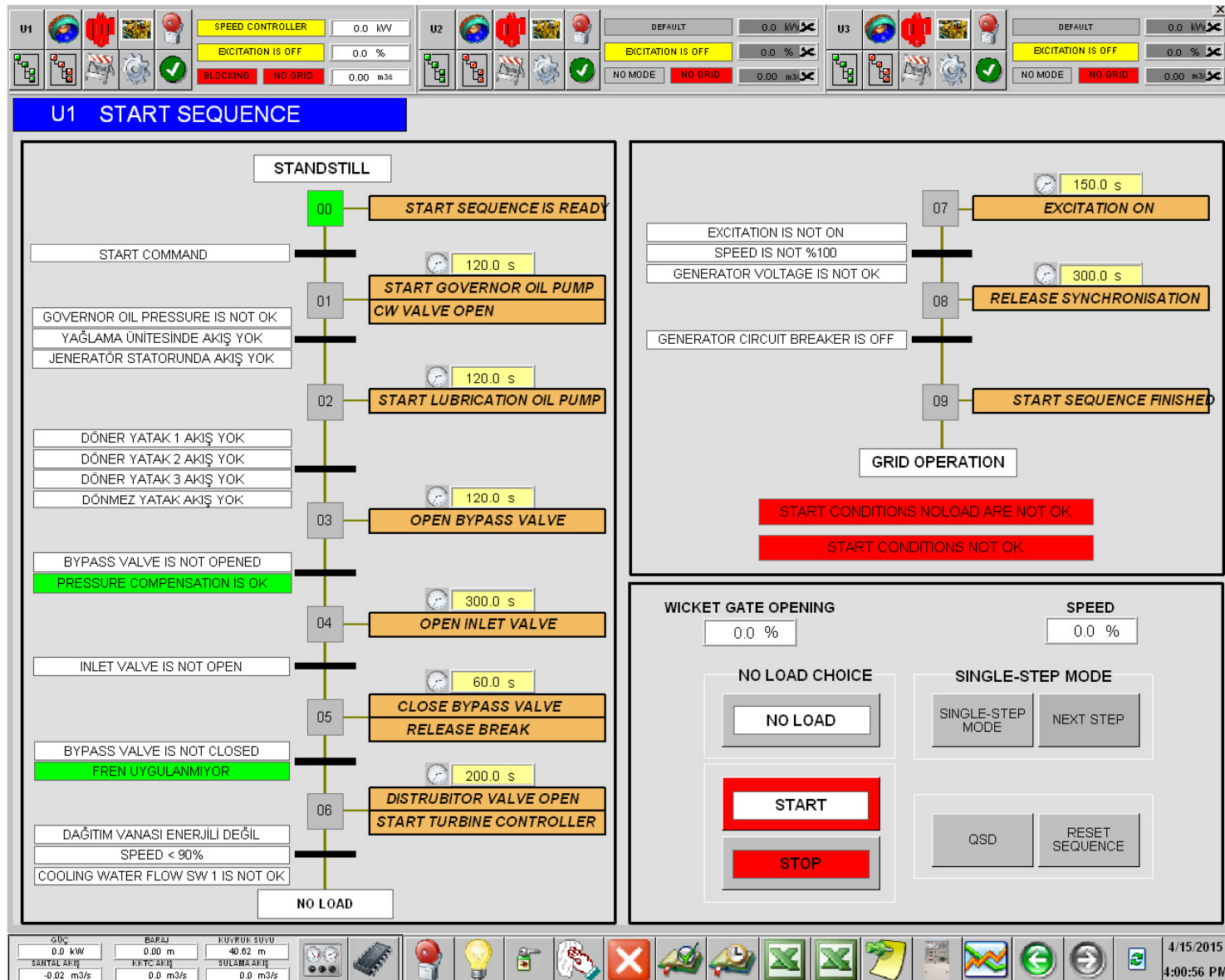
CAPACITIES & ABILITIES

SCADA



CAPACITIES & ABILITIES

SCADA



REFERENCES

ORDU HEPP – POWER PLANT

PLANT

- Unit Nominal Voltage: 6.3kV
- Number of Unit: 4
- Total power: 47.9 MW



REFERENCES

ORDU HEPP – SWITCHYARD



SWITCHYARD:

Outdoor type :

▪Nominal Voltage:	154kV
▪Highest System Voltage:	170kV
▪Short Circuit Current:	31,5kA
▪Number of Unit Feeders:	4
▪Line Feeders:	2
▪Coupler:	1
▪Main Busbar Feeders:	2

REFERENCES

GÖKGEDİK HEPP – POWER PLANT

PLANT

- Unit Nominal Voltage: 6.3kV
- Number of Unit: 3
- Total power: 24.8 MW



REFERENCES

AKHMETA HEPP – POWER PLANT GEORGIA

PLANT

- Unit Nominal Voltage: 6.3kV
- Number of Unit: 3
- Total power: 9.1 MW



REFERENCES

AYVALI HEPP- SWITCHYARD



SWITCHYARD:

Outdoor type :

▪Nominal Voltage:	154kV
▪Highest System Voltage:	170kV
▪Short Circuit Current:	31,5kA
▪Number of Unit Feeders:	3
▪Line Feeders:	2
▪Coupler:	1
▪Main Busbar Feeders:	2

REFERENCES

DARAN HEPP I&II– POWER PLANT

PLANT

- Unit Nominal Voltage: 10.5kV
- Number of Unit: 4
- Total power: 68.2 MW

