



(BIM) Building Information Management - Case Studies

Rev.0

1. SU-YAPI Engineering & Consulting Inc.

SU-YAPI Engineering & Consulting Inc. is an independent engineering and consulting company established in 1964. Head office is located in Ankara, Turkey. SU-YAPI has completed more than 650 projects both at home and overseas, in various engineering discipline.

SU-YAPI, with its highly competent and qualified technical and administrative staff, reaching 600 in number and comprising engineers from many disciplines, in addition to architects, economists, business managers, sociologists and technicians, serves its basic objective of meeting the requirements of the clients with the highest quality, at the lowest cost and in the shortest time.

FIGURE 1 COUNTRIES SERVED



As a recognition of Su-Yapi's continuing success, the firm has been included in the "Top 225 International Design Firms" list of Engineering News Record, a leading publication on the international contracting and technical consultancy services sector, at rank 156 in 2017 and 143 in 2018.

ENR

THE TOP 225 INTERNATIONAL DESIGN FIRMS

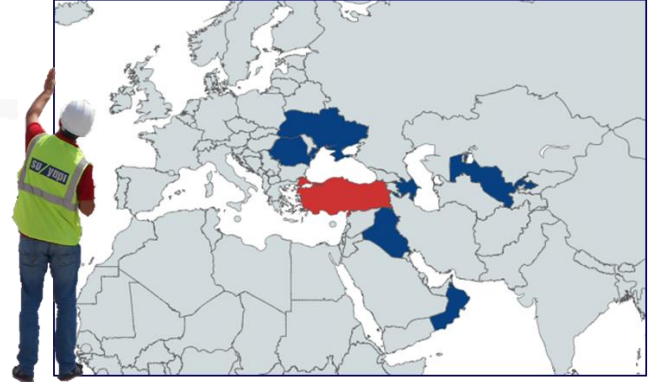
The Top 225 List

Country offices

**Head Office**

Mustafa Kemal Mah. 2128. Sokak No:6

06530 Çankaya, Ankara / TURKEY

Phone : + 90. 312. 441 32 26**Fax** : + 90. 312. 438 27 26**E-mail** : suyapi@suyapi.com.tr**Web** : www.suyapi.com.tr**Azərbaycan Temsilçiliği / Azerbaijan Branch Office**

World Business Centre,

S.Vurgun - S.Rahimov Streets Crossing No: 20/2

Baku / AZERBAIJAN

Phone : + 994.12. 597 30 50**Fax** : + 994.12. 597 30 70**E-mail** : azerbaijan@suyapi.com.tr**Ukrayna Ofisi / Ukraine Branch Office**7A, Office 43, Klovsky Descent,
Kyiv, 01021, UKRAINE**Phone** : +380. 44. 290 41 02**E-mail** : ukraine@suyapi.com.tr**Ўзбекистон Temsilçiliği / Uzbekistan Branch Office**

Mirzo-Ulubekskiy Rayonu, Ulitsa Irrigator, Dom 7

KB.4 Tashkent / UZBEKISTAN

Phone : +998. 71. 267 98 29**E-mail** : uzbekistan@suyapi.com.tr**Romanya Ofisi / Romania Branch Office**

Piata Sfântul Ștefan Nr. 7 Sector 2. București / ROMANIA

Phone : +40. 730 665 665**E-mail** : romania@suyapi.com.tr**Umman Ofisi / Oman Branch Office**

Al-Maha Street, Building No:65 Flat No:201

Al-Khuvair 33, Muscat / SULTANATE OF OMAN

Phone : +968. 950. 68 368**E-mail** : oman@suyapi.com.tr**Irak Ofisi / Iraq Branch Office**

100 Meter Str. Vital Village No:1,

Erbil - KRG / IRAQ

Phone : + 964. 771 866 29 09**E-mail** : iraq@suyapi.com.tr

Memberships:

**FIDIC** - International Federation of Consulting Engineers**EFCA** - European Federation of Consulting Engineers**FCIC** - Federation of Consultants from Islamic Countries**TMMB** - Association of Turkish Consulting Engineers & Architects**ICID** - International Commission on Irrigation and Drainage

International Financing Institutions Registered Bank Registrations:

- World Bank (Registration No :1155)
- Islamic Development Bank (Registration No. S0109)
- Asian Development Bank (Registration No. 002143)
- Kuwait Fund for Arab Economic Development (Form No. 322)
- United Nations Services Procurement Division (Registration No.19740)

Some Obtained Document of Company:

- Incorporation Certificate from Chambers of Engineers
- EPDK Construction and Service Certificate (Certificate no : YHS / 344-24/470)
- EIA Competence Certificate (Doc no : 22)
- ISO 9001:2015 Quality Management System Certificate
- ISO 140001:2004 Environment Management System Certificate
- OHSAS 18001:2007 Labor Safety and Security Management System Certificate

Fields of Activity and Services Provided:

SU-YAPI provides feasibility, planning, design, consultancy and construction supervision services in the following fields of activity. Either all of or one of these services are provided, depending on the request of the clients.

Dams and EPP

- Structures of all types, including hydroelectric power plants, dams and run-of-river weirs, tunnels, channels, energy generation units, switchyards and transmission systems,
- Hydroelectric Power Plants
- Thermal power plants,
- Renewable Energy

Municipal Infrastructure and Environment

- Potable, domestic and industrial water supply, transmission, treatment and distribution,
- Wastewater and stormwater drainage projects including collection, treatment and discharge,
- Solid waste storage, management and disposal
- Environmental and Rural Projects
- Environmental and Social Impact Assessment (ESIA) Studies
- Rural development and on-field projects

Water Resources and Hydraulic Engineering

- Water Resources Planning
- River Rehabilitation and Flood Protection
- Irrigation and Drainage Systems

- Agricultural Development Planning and Training
- Preliminary Evaluation Reports

Transportation Projects

- Transportation planning and feasibility studies
- State highways, motorways and access roads to various facilities
- Railways and urban/suburban rail transit systems (subways and light rail mass transit systems), railway track structures, underground and surface stations and transfer structures
- Tunnels, bridges, junctions / interchanges, under-/over-passes and all other related engineering structures

Buildings, Mass Housing Projects and Apartment Tower Blocks

- Multipurpose and specific purpose buildings (health, education, religion, tourism etc.)
- Mass housing units,
- Landscaping and social facilities,
- Industrial complexes, residential tower blocks and worksite temporary facilities,
- Site arrangements, access roads and their substructures.

Oil & Gas

- Oil pipelines
- Natural Gas pipelines
- Compressor Stations
- Metering Stations

Services

The following services are provided under the above projects:

Planning

- Master Plans
- Feasibility Studies
- Preliminary Design and Optimization Studies
- Environmental and Social Impact Assessment (ESIA)
- Economical and Financial Analyses
- Pricing and Ratifications

Investigations

- On-shore and Off-shore Geological, Geotechnical Investigations
- Hydrogeological Investigations
- Topographical Investigations
- Meteorological, Hydrological and Environmental Investigations

Design

- Conceptual Designs
- Feasibility Designs
- Final Designs
- Detail Designs (3D BIM Modelling)
- Technical Specifications

Supervision

- Construction Supervision
- Environmental Monitoring
- Commissioning
- Financial Audit
- Monitoring the Cash Flow
- Monitoring the Work Progress

Tendering Process

- Tender Documentation
- Bills of Quantities and Cost Estimate
- Technical Specifications
- Procurement Specifications
- Construction Contract (Draft)
- Support to the Client in Technical Qualification and Contract Award Process

Management

- Tender Documentation
- Purchase Specifications
- Technical Evaluation
- Contract Condition (Draft)
- Contract Management

Consultancy

- Institutional and financial strengthening
- Technical Trainings
- Operational Guidelines
- Investment Consultancy
- Financial Credit Control Consulting

2. BIM Activities

SU-YAPI works with BIM since R&D process that was initiated in 2014. BIM projects are commonly known to be used for the superstructures. BIM offers a great advantage in infrastructure, bridge, tunnel, hydroelectrical power plants, etc. specialty projects. For this reason, current projects are re-modeled with BIM and after reaching a certain level, even if not demanded by the Client for commercial affairs, is implemented. SU-YAPI has developed its experiences in terms of BIM projects. Our staff has taken an exam prepared by an independent organization for the used BIM model software and has been awarded with a certificate.

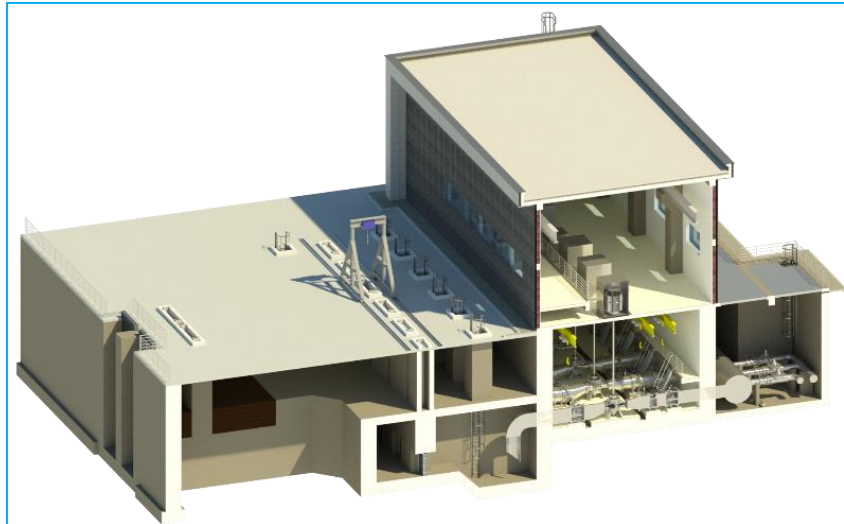
Our company includes many of the basic disciplines required to perform a specific project. Being a multidisciplinary company provides additional benefits in terms of coordination and workflow efficiency when working with BIM. And so, our design teams are able to produce very high-quality BIM projects.

We are aware BIM projects includes more than just coordination and design works. Our R&D team follows the latest innovations and all issues that can be solved with BIM.

Sample Projects (Autodesk Shared View Links & Videos)

Water Intake Structure and Pumping Station

[A360 Link](#)



Administrative Building

[A360 Link](#)

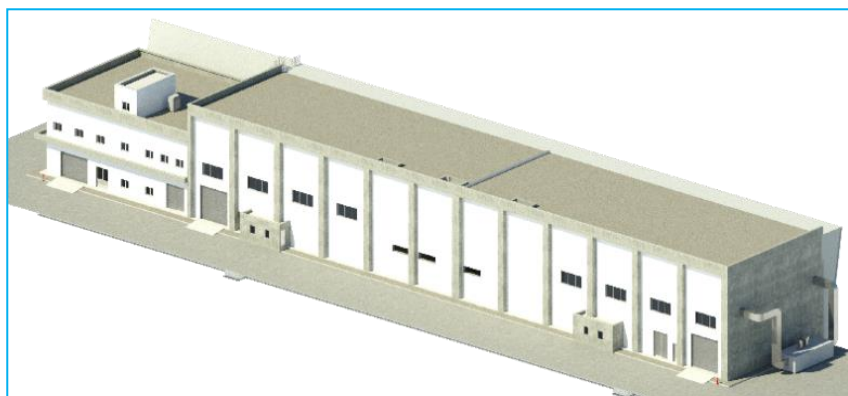
[Video Link](#)

[Video Link](#)



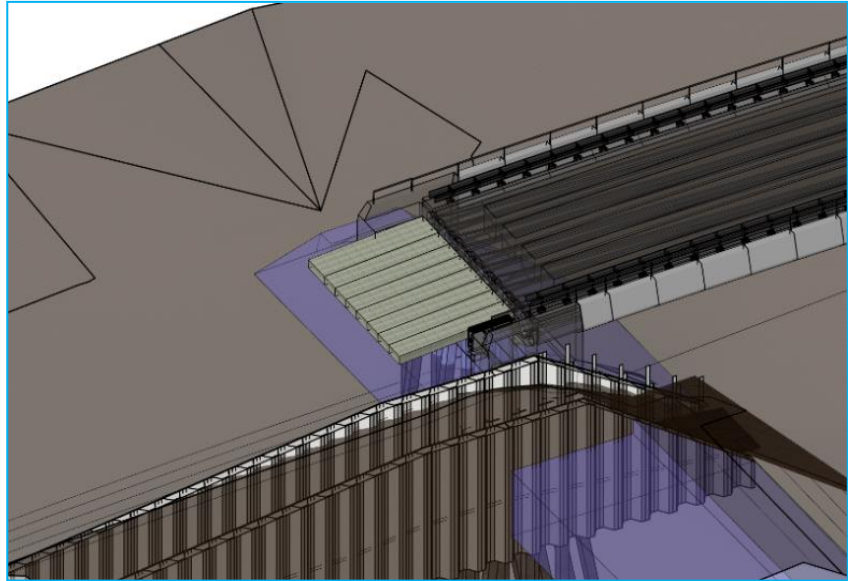
GIS Building

[A360 Link](#)



Viaduct

[A360 Link](#)



Hydroelectric Power Plant

Power House

[A360 Link](#)

